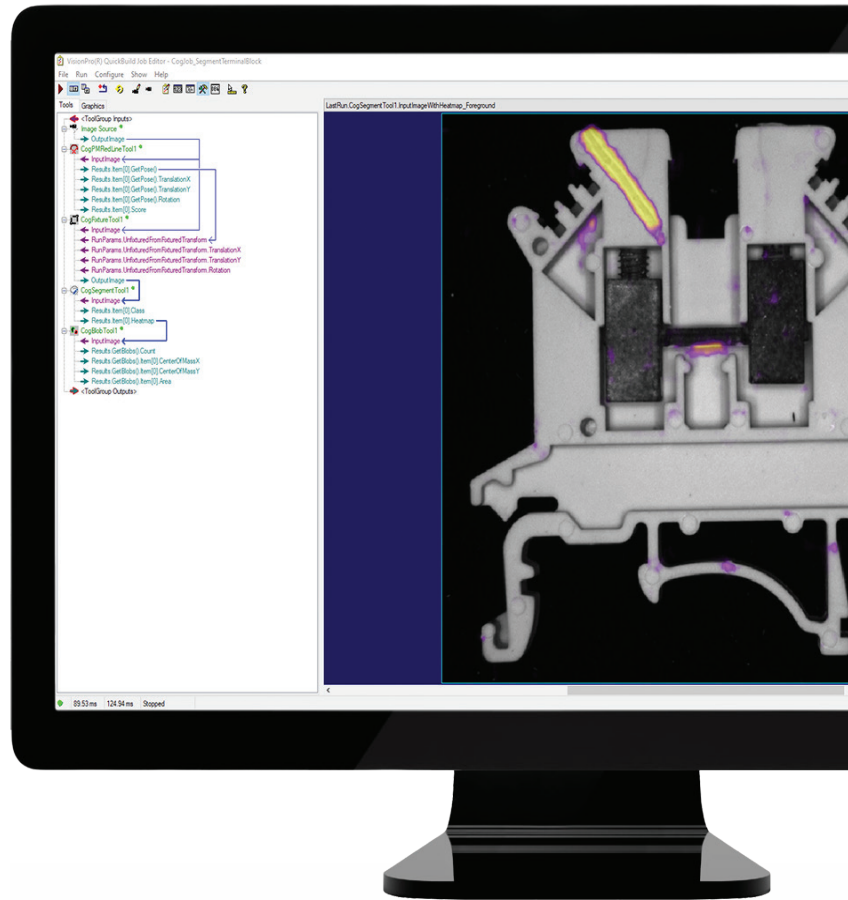


## VISIONPRO

Solve your most challenging vision applications

VisionPro® is a PC-based software combining best-in-class vision technologies in an easy-to-use development environment. Powerful enough to automate any vision task, VisionPro leverages extensive tool prototyping to enable rapid deployment of highly-customizable applications. With rule-based tools and AI-based edge learning capabilities, this innovative software is ready to support your vision needs for today and tomorrow.



### Intuitive development environment and modular tool blocks

Graphical interface with drag-and-drop programming simplifies setup



### Industry-leading vision tools

Comprehensive set of rule-based tools addresses a broad range of applications



### Performance optimization

Robust design accommodates multi-core and multi-threaded processors



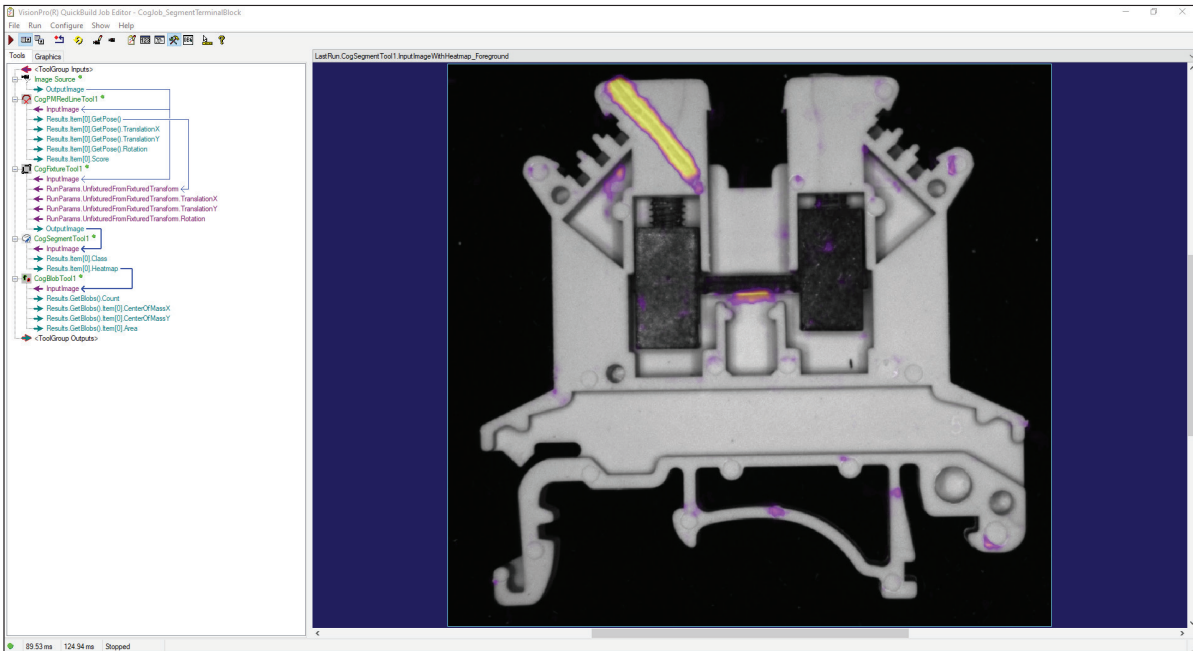
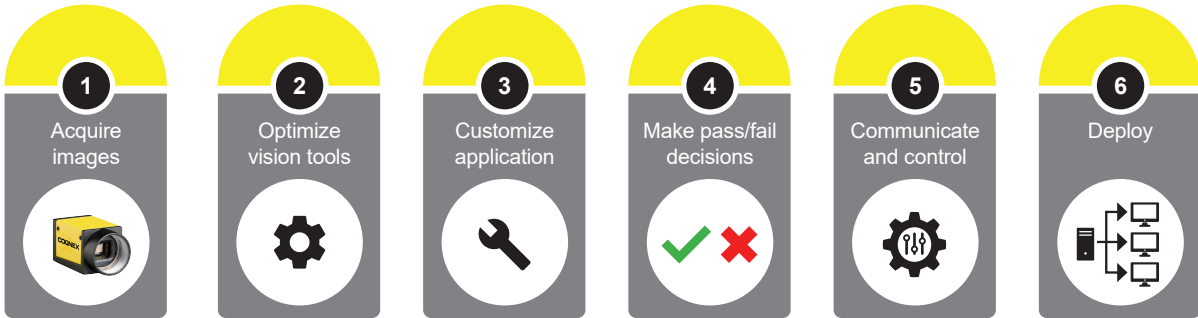
### Powerful edge learning technology

Combine the power of AI-based edge learning technology with the reliability of traditional rule-based tools in the same prototyping environment. Users can link rule-based and edge learning tools to solve complex vision tasks in minutes, and deploy the job in a standard VisionPro tool block.

# QuickBuild environment shortens development time

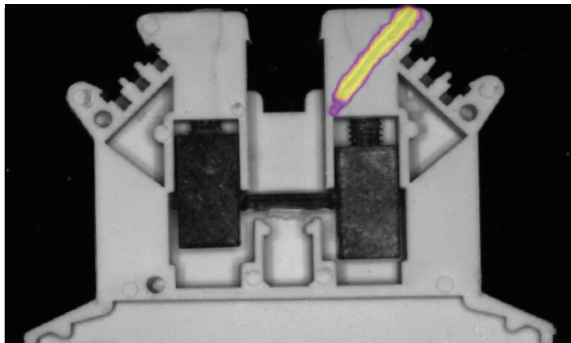
VisionPro makes it simple to automate vision tasks with the QuickBuild™ prototyping environment. Using the intuitive graphical interface and point-and-click training, you can easily configure acquisition, select and optimize tools, and make pass/fail decisions, with no prior programming experience required. Modular tool blocks enable users to quickly create and reuse components, further supporting fast and flexible deployment. Plus, the ability for scripting addresses more sophisticated vision applications.

## QuickBuild workflow



# Edge learning tools deliver the power of deep learning without the complexity

VisionPro includes ViDi™ EL tools that offer a simpler and faster method of solving applications. ViDi EL tools empower users to solve problems with example-based training, no parameter adjustments or vision expertise necessary.



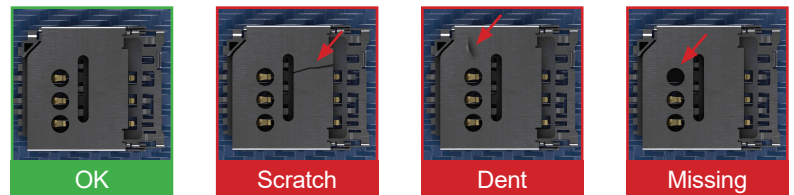
## ViDi EL Segment

Quickly separate desired pixels from the background with the ViDi EL Segment tool. Highlight foreground pixels in five to ten images and let edge learning technology do the rest. This enables users to detect foreign objects, extract parts from a scene, highlight defect areas, or tackle any other task where specific regions within an image are required for further processing.



## ViDi EL Classify

Go beyond the standard OK/NG output with the ViDi EL Classify tool. The tool identifies and sorts parts based on multiple features or characteristics. This enables users to classify defects into different categories and correctly identify parts with variation, allowing you to automate a wider range of tasks.



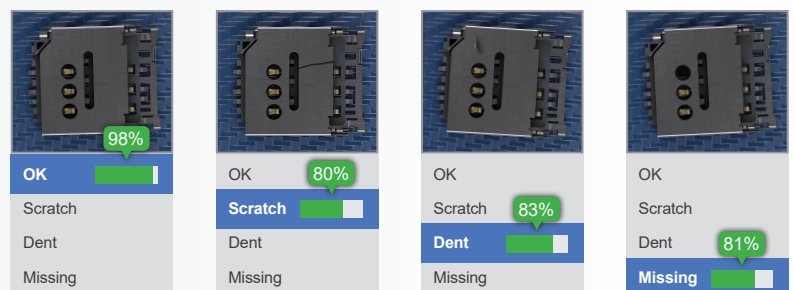
### Training

ViDi EL tools are trained in minutes, using as few as five to ten images to deliver accurate results.



### Real-time visual feedback

View results from your edge learning tool in real-time for instant feedback. For ViDi EL Classify, a confidence score indicates the predicted class of an unlabeled image, while for ViDi EL Segment, a heatmap indicates the predicted segmentation region. Users can then accept the prediction or determine that re-training is needed.



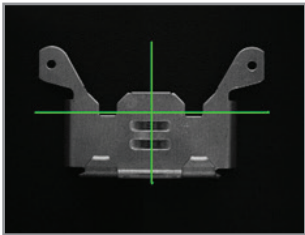


# Extensive library of tools tackles your toughest vision challenges

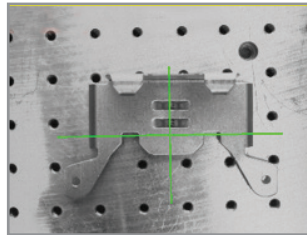
From inspection and verification to robotic guidance applications, VisionPro offers rule-based and edge learning tools capable of solving vision applications of ranging complexity. Industry-proven, rule-based tools offer reliable, highly accurate automation, while edge learning tools provide solutions for tasks that introduce significant variation.

## PatMax

The industry standard for part and feature location.



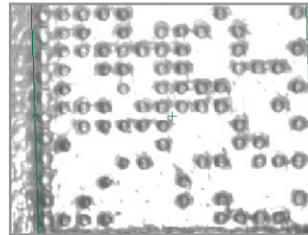
Trained image



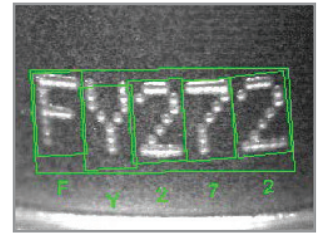
Confusing background

## Identification and Verification

Optimized code reading and character verification.



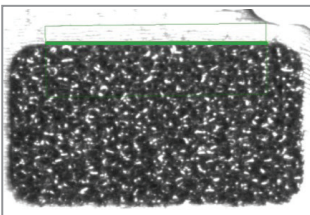
IDMax<sup>®</sup> – Degraded DataMatrix codes



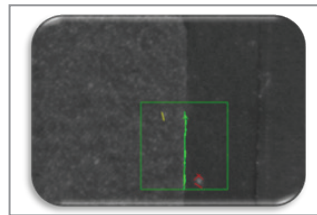
OCVMax – Vertical shift dot-matrix font

## LineMax

Advanced line finding under low contrast and noisy conditions.



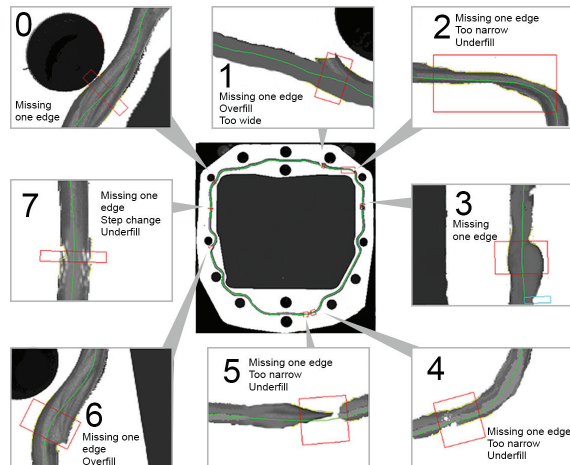
Noisy background



Low contrast

## BeadInspect

Robust bead inspection locates glue beads on surfaces and detects defects.



# COGNEX

Companies around the world rely on Cognex vision and barcode reading solutions to optimize quality, drive down costs and control traceability.

Corporate Headquarters One Vision Drive Natick, MA 01760 USA

### Regional Sales Offices

#### Americas

North America +1 844 999 2469  
Brazil +55 11 4210 3919  
Mexico +800 733 4116

#### Europe

Austria +43 800 28 16 32  
Belgium +32 289 370 75  
Czechia +420 800 023 519  
France +33 1 76 54 93 18  
Germany +49 721 958 8052  
Hungary +36 800 80291

Ireland +353 21 421 7500  
Italy +39 02 3057 8196  
Netherlands +31 207 941 398  
Poland +48 717 121 086  
Romania +40 741 041 272  
Spain +34 93 299 28 14  
Sweden +46 21 14 55 88  
Switzerland +41 445 788 877  
Turkey +90 216 900 1696  
United Kingdom +44 121 29 65 163

#### Asia-Pacific

Australia +61 2 7202 6910  
China +86 21 2279 9455

India +91 7305 040397  
Indonesia +62 21 3076 1792  
Japan +81 3 5977 5400  
Korea +82 2 539 9047  
Malaysia +6019 916 5532  
New Zealand +64 9 802 0555  
Phillipines +63 2 8539 3990  
Singapore +65 3158 3322  
Taiwan +886 02 7703 2848  
Thailand +66 6 3230 9998  
Vietnam +84 98 2405167

© Copyright 2023, Cognex Corporation. All information in this document is subject to change without notice. Cognex, PatMax, and VisionPro are registered trademarks of Cognex Corporation. QuickBuild, ViDi, and LineMax are trademarks of Cognex Corporation. All other trademarks are the property of their respective owners. Printed in the USA.

Lit. No. VPro10DS-05-2023-EN

[www.cognex.com](http://www.cognex.com)